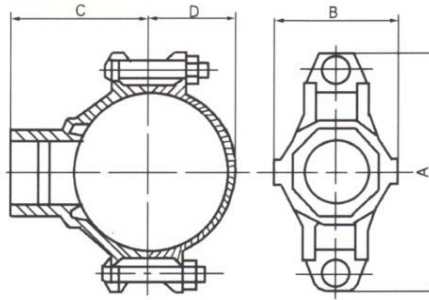


MECHANICAL OUTLET TEE (THREADED)

Model: MTE01



Nominal Size Inches	Pipe O.D. mm/in	Working Pressure psi/kPa	Hole Dia. +1.6, 0 / +0.063, 0 mm/in	Dimensions				Bolt Size Dia. x Lg. in x mm	Net Weight Approx kg
				A mm/in	B mm/in	C mm/in	D mm/in		
2x1 ¹ / ₄	60.3X42.2	300	45	116.0	76.0	62.0	39.0	3/8X55	0.86
	2.375X1.660	2068	1.75	4.57	2.99	2.44	1.54		
2x1 ¹ / ₂	60.3X48.3	300	45	116	76.0	62.0	39.0	3/8X55	0.89
	2.375X1.900	2068	1.75	4.57	2.99	2.44	1.54		
2 ¹ / ₂ x1 ¹ / ₄	73.0X42.2	300	51	144.0	84.5	73.0	49.0	1/2X60	1.38
	2.875X1.660	2068	2.00	5.67	3.33	2.87	1.93		
2 ¹ / ₂ x1 ¹ / ₂	73.0X48.3	300	51	144.0	84.5	73.0	49.0	1/2X60	1.42
	2.875X1.900	2068	2.00	5.67	3.33	2.87	1.93		
3x1 ¹ / ₄	88.9X42.2	300	51	160.0	85.5	80.0	53.5	1/2X75	1.52
	3.500X1.660	2068	2.00	6.30	3.37	3.15	2.11		
3x1 ¹ / ₂	88.9X48.3	300	51	160.0	90.0	80.0	53.5	1/2X75	1.66
	3.500X1.900	2068	2.00	6.30	3.54	3.15	2.11		
3X2	88.9X60.3	300	64	160.0	104.0	80.0	53.5	1/2X75	1.87
	3.500X2.375	2068	2.50	6.30	4.09	3.15	2.11		
4X1 ¹ / ₄	114.3X42.2	300	51	186.0	89.0	95.0	68.0	1/2X75	1.99
	4.500X1.660	2068	2.00	7.32	3.50	3.74	2.68		
4x1 ¹ / ₂	114.3X48.3	300	51	186.0	104.4	97.0	68.0	1/2X75	2.07
	4.500X1.900	2068	2.00	7.32	4.11	3.82	2.68		
4X2	114.3X60.3	300	64.0	186.0	104.4	1200.0	68.0	1/2X75	2.29
	4.500X2.375	2068	2.50	7.32	4.11	3.94	2.68		
4x2 ¹ / ₂	114.3X76.1(73)	300	70.0	186.0	124.0	100.0	68.0	1/2X75	2.43
	4.500X3.000	2068	2.75	7.32	4.88	3.94	2.68		
4X3	114.3X88.9	300	89.0	208.0	96.5	100.0	68.0	1/2X75	2.80
	4.500X3.500	2068	3.50	8.19	3.80	3.94	2.68		
5X1 ¹ / ₄	141.3X42.2	300	51	226.0	98.0	110.0	81.0	5/8X85	3.65
	5.563X1.660	2068	2.00	8.90	3.86	4.33	3.19		
6X2	168.3X60.3	300	64.0	246.0	114.0	135.0	98.5	5/8X110	3.87
	6.625X2.375	2068	2.50	9.69	4.49	5.31	3.88		
6X2 ¹ / ₂	168.3X73.0	300	70.0	246.0	115.0	134.0	98.5	5/8X110	4.41
	6.625X2.875	2068	2.75	9.69	4.53	5.28	3.88		
6X4	168.3X114.3	300	114.0	246.0	157.0	141.0	98.5	5/8X110	5.80
	6.625X4.500	2068	4.50	9.69	6.18	5.55	3.88		

Pipe: Schedule 10, 40 steel pipe.

Material: Housing - Ductile iron conforming to ASTM A-536, Grade 65-45-12

Protective Coatings: ▪ Non-lead orange paint ▪ Fire brigade red (optional) non - lead paint
▪ Hot dipped galvanized conforming to ASTM A-153

Gasket: (Specify when ordering) Gasket selection should be verified to be compatible for the specific application.

(See Data sheet TD3000R for aid in selecting proper gasket)

Specifications, illustrated materials and descriptions are accurate as known at time of publication and are subject to change without notice.