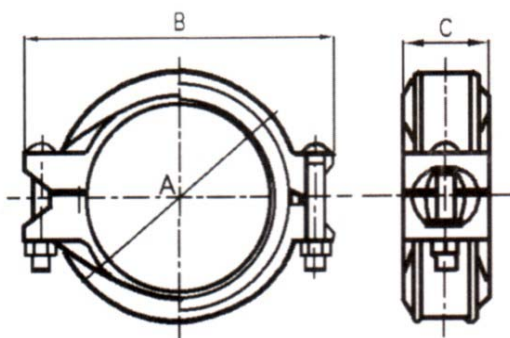


RIGID COUPLING

Model: RGC01



Nominal Size Inches	Pipe O.D. mm/in	Working Pressure psi/kPa	Nominal Dimensions			Bolt Size Dia. x Lg. in x mm	Net Weight Approx kg
			A mm/in	B mm/in	C mm/in		
2	60.3	300	86.0	132.5	46.5	$\frac{3}{8}$ x 55	0.96
	2.375	2068	3.38	5.22	1.84		
2 $\frac{1}{2}$	73.0	300	99.0	154.0	46.5	$\frac{1}{2}$ x 60	1.20
	2.875	2068	3.90	6.06	1.84		
3 O.D.	76.1	300	102.5	152.5	46.5	$\frac{1}{2}$ x 70	1.31
	3.000	2068	4.04	6.00	1.84		
3	88.9	300	117.0	168.5	46.5	$\frac{1}{2}$ x 75	1.50
	3.500	2068	4.61	6.63	1.84		
4	114.3	300	148.0	200.0	52.5	$\frac{1}{2}$ x 75	2.22
	4.500	2068	5.82	7.87	2.06		
5	141.3	300	172.0	231.5	52.5	$\frac{5}{8}$ x 85	2.60
	5.563	2068	6.77	9.11	2.06		
6 $\frac{1}{2}$ O.D.	165.1	300	199.5	267.5	53.5	$\frac{5}{8}$ x 85	3.42
	6.500	2068	7.85	10.54	2.10		
6	168.3	300	203.0	271.5	53.5	$\frac{5}{8}$ x 85	3.50
	6.625	2068	8.00	10.70	2.10		

Model	Pipe	Size (in.)
RGC01	Schedule 10 steel pipe	2, 2-1/2, 3, 4, 5, 6
RGC01	BS1387 Schedule 10 steel pipe	3 O.D., 6-1/2 O.D.
RGC01	Schedule 40 steel pipe	2, 2-1/2, 3, 4, 5, 6
RGC01	BS1387 Schedule 40 steel pipe	3 O.D., 6-1/2 O.D.

Material: Cast - Ductile iron conforming to ASTM A-536, Grade 65-45-12

Protective Coatings: ▪ Non-lead orange paint ▪ Fire brigade red (optional) non - lead paint
▪ Hot dipped galvanized conforming to ASTM A-153

Gasket: (Specify when ordering) Gasket selection should be verified to be compatible for the specific application.
(See Data sheet TD3000R for aid in selecting proper gasket)

Specifications, illustrated materials and descriptions are accurate as known at time of publication and are subject to change without notice.